



Rooted in Culture.
Grounded In Community.
Growing Every Learner.

Dim luu-ts'ipkw hli gawisit.

Nisga'a School District Strategic Plan

2025-2030



Strategic Plan Contents

| | | |
|-----------------------------|-------|----|
| Board Introduction | _____ | 01 |
| Nisga'a Vision For Learning | _____ | 02 |
| Executive Summary | _____ | 02 |
| Vision & Mission | _____ | 03 |
| Core Values | _____ | 04 |
| Beliefs | _____ | 05 |
| Strategic Priorities | _____ | 06 |





Board of Education – Introduction

The Nisga'a Board of Education is honoured to present this strategic plan. It reflects our shared commitment to educational excellence rooted in the language, culture, and values of the Nisga'a peoples. This plan affirms our belief that every learner deserves a high-quality education that honours identity and opens doors to opportunity, choice, and lifelong success. It is the result of deep listening, collaboration, and reflection with one another.

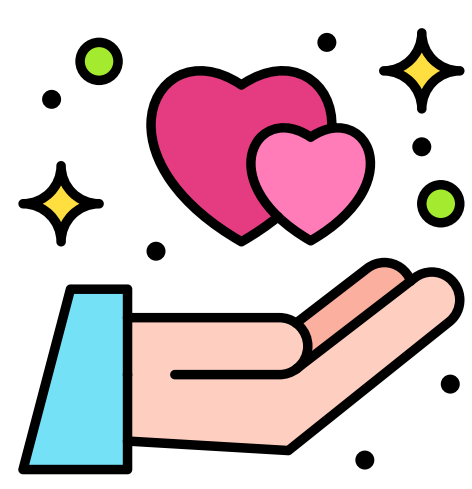
Grounded in the vision for education that was brought forward over fifty years ago, this plan looks ahead with purpose. It embraces innovation while remaining true to our roots. Through these strategic priorities, we commit to creating inclusive and culturally grounded learning environments where students and staff thrive. By empowering learners, supporting educators, and strengthening the systems that sustain our schools, we are building a resilient, responsive, and future-ready district that reflects the heart of who we are as Nisga'a.

Nisga'a Education

A Vision For Learning

Hlaxwhl hli ganwilaak'ilshl Nisga'a, gan wilhl daxgat wil dip hooxhl Sayt-K'ilim-Goot, Yuuhlimk'askw, Ayuukhl Nisga'a ganhl Hawahlkws; nihl haniihitkwhl Nisga'a tgun ahl ts'im ganwilaak'is, ganwilxo'oskw ganhl kwhlixoosa'anskw sit'aatkwsit wil sgathl hlgutk'ihlkw.

Motion to accept: Verna Williams (Ts'aagabin) Seconded by: Alice Azak (K'iigapks) Question: Herb Morven (K'eexkw)
Adopted at Fluent Speakers meeting – June 23, 2010



Nisga'a Education is a way to learn and live the principles of life which entails Sayt-K'ilim-Goot, Nisga'a Ayuuk and the Yuuhlimk'askw system. Living Sayt-K'ilim-Goot creates a secure foundation that respects a balance between Nisga'a language and wisdom rooted in the land, and the languages and wisdom of other peoples. Education is a way to learn and live Nisga'a Ayuuk. The Yuuhlimk'askw system guides how to live. Nisga'a Education begins at birth.

Executive Summary

Rooted In Culture. Grounded In Community. Growing Every Learner.

The Nisga'a School District's Strategic Plan is a forward-looking roadmap and collective commitment to nurturing the whole learner – mind, heart, body, and spirit; while building a resilient, inclusive, and innovative educational system. Developed through meaningful engagement this plan outlines four strategic priorities that will guide our work over the next five years.

These priorities include:

- (1) embedding Nisga'a language and culture throughout all learning environments;
- (2) empowering learners through culturally affirming, future-ready education so they have the essential skills to thrive in our communities and beyond;
- (3) fostering a thriving professional culture rooted in collaboration and growth; and
- (4) strengthening district systems to ensure sustainability, responsiveness, and continuous improvement.

Together, these goals position the district to honour Nisga'a cultural ways of knowing and being while preparing learners and staff for success in a rapidly changing world.

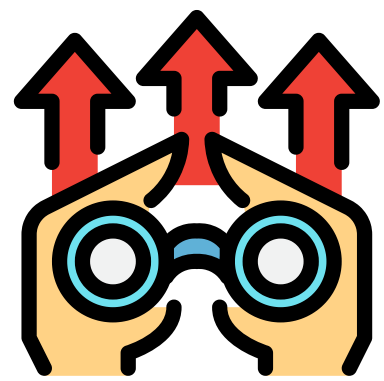




Vision & Mission

Every Action, Every Day
Builds a Stronger Future Together.

The Nisga'a School District's vision and mission serve as the compass for all operational planning and daily decision-making. Our vision sets a bold, aspirational direction for what we strive to become. Our mission grounds that aspiration in daily practice, ensuring that every action reflects our core values and community commitments. Together, they guide how we design learning experiences, build relationships, and lead with purpose. By aligning our strategic goals with this shared vision and mission, we create a coherent and values-driven path toward meaningful, sustainable impact for all learners and communities.



Vision

To become a learning community where courage and collaboration empower everyone to thrive.

This vision unites the district around a shared aspiration for educational excellence rooted in cultural integrity and community engagement. It reflects the community's desire to honour Nisga'a identity while preparing students to thrive in broader, global contexts. The value of **collaboration** embodies *Sayt K'ilim Goot*—the principle of unity and collective purpose; underscoring the importance of inclusive, community-centred education. The emphasis on **courage** speaks to the district's commitment to innovation, bold leadership, and readiness to meet the challenges of a rapidly changing world. Together, these elements guide our transformation into a learning community where every individual is empowered to thrive.



Mission

We grow minds, hearts, and spirits through culture, compassion and connection.

This mission reflects the district's daily commitment to holistic, culturally grounded education that nurtures lifelong learning and well-being. It builds on the foundation laid in the previous strategic plan and aligns with global priorities by emphasizing the growth of minds, hearts, and spirits of all learners. Through **culture, compassion, and connection**, the mission guides how we fulfill our vision; ensuring that every learner is supported emotionally, culturally, and relationally. It also resonates with global Indigenous learning frameworks, which prioritize identity, community, and wellness as essential elements of student success. By living this mission each day, we create the conditions for meaningful learning and lasting impact.

Core Values

One Heart, Many Strengths, Learning Together.

Guided by Sayt K'ilim Goot, our values express who we are, how we learn, and how we walk together. They shape the heart of our district grounding every relationship, decision, and learning experience in cultural integrity, compassion, and collective purpose. These values are not just ideals; they are lived practices that connect generations, strengthen communities, and inspire lifelong growth.

- ★ **Connection**
We honour relationships—with self, others, land, language, and spirit.
- ★ **Culture**
We uplift Nisga'a ways of knowing, being, and doing.
- ★ **Curiosity**
We nurture wonder, exploration, and a love of lifelong learning.
- ★ **Compassion**
We care deeply for one another, acting with kindness, empathy, and respect.
- ★ **Courage**
We face challenges with strength, resilience, and pride in who we are.
- ★ **Collaboration**
We work together in unified in purpose. Sayt K'ilim Goot, for the greater good of all.

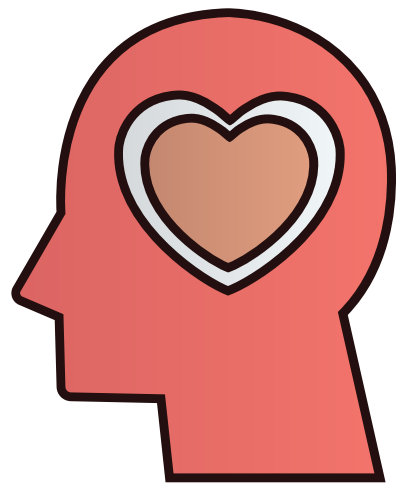


When core values are deeply embedded in daily practice, they become more than ideals—they shape the very fabric of how individuals and communities learn, lead, and live.

Values like connection, culture, curiosity, compassion, courage, and collaboration guide decisions, relationships, and learning environments, creating spaces where people feel seen, supported, and inspired. When these values inform our ways of knowing, being, and doing, they foster trust, belonging, and purpose; laying the foundation for transformative impact across generations.

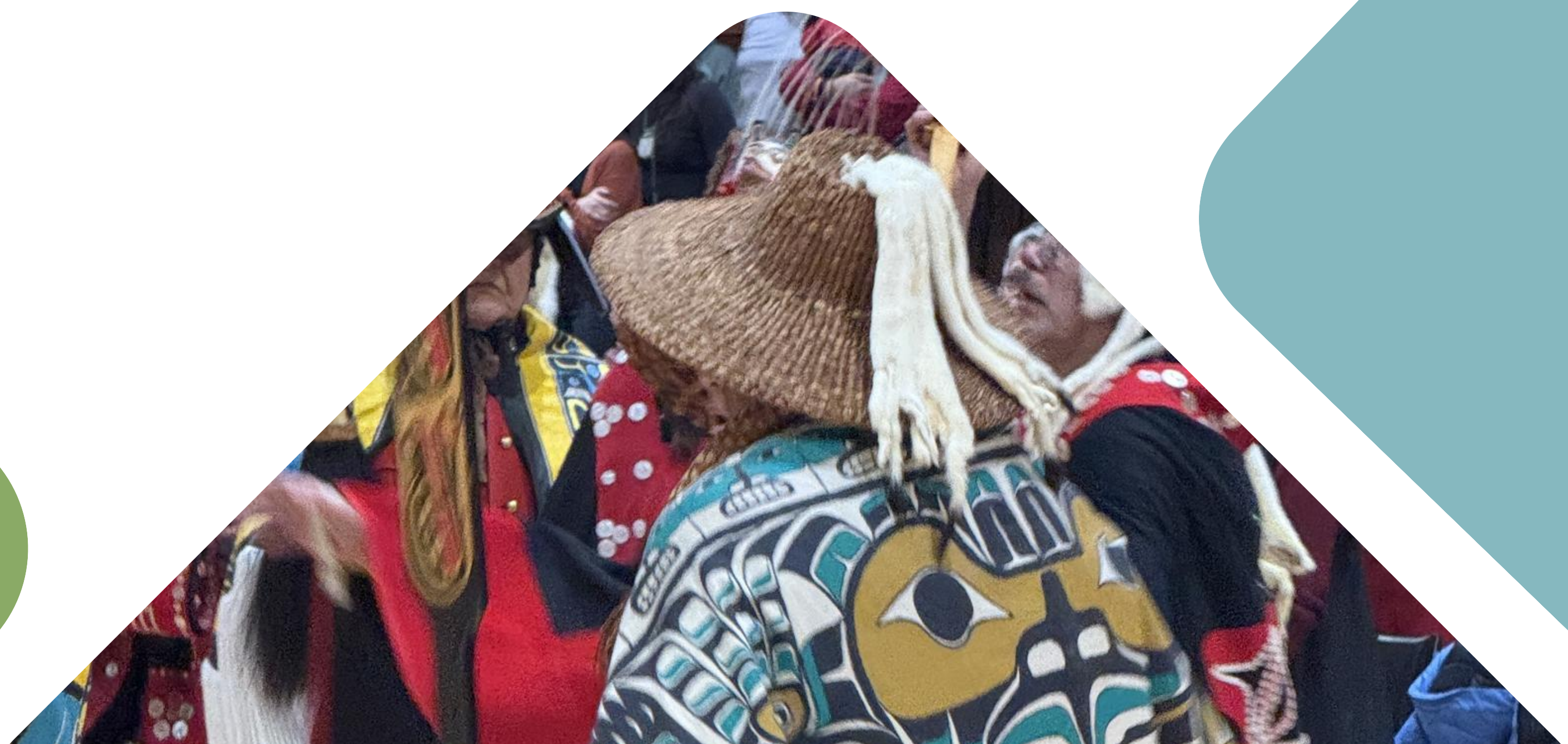
Beliefs

Empowering Learners, Honouring Identity, Sustaining Futures.



To realize the aspirations of our strategic plan, we must share a **common foundation of beliefs**. These beliefs guide our actions, shape our relationships, and unite us in purpose across the district.

- ★ **Every learner is capable, valued, and deserving of success.** We believe in the potential of every student and commit to nurturing their growth through inclusive, affirming, and high-quality learning experiences.
- ★ **Culture and identity are central to learning.** We honour Nisga'a language, knowledge systems, and ways of being as essential to student success and community strength.
- ★ **Learning is a shared journey.** Students, families, school & district staff, and community members all play vital roles in supporting learning and well-being.
- ★ **Relationships are foundational.** Trust, respect, and collaboration are the heart of strong schools and communities.
- ★ **Well-being and belonging are essential for achievement.** When learners and staff feel safe, seen, and supported, they thrive.
- ★ **Innovation and ancestral knowledge systems can walk together.** We embrace new ideas while staying rooted in the wisdom of our ancestors and the values of our communities.
- ★ **Leadership lives at all levels.** Everyone can lead and contribute to positive change.
- ★ **Sustainability is our shared responsibility.** We care for the land, resources, and systems that sustain ourselves and our learning, today and for future generations.



Strategic Priorities

Learning Together, Leading Together, Thriving Together.

Our strategic priorities guide the district's commitment to holistic, inclusive, and future-focused education. These priorities reflect our dedication to nurturing learners, empowering staff, and strengthening systems – all in service of creating vibrant learning environments where language, culture, well-being, and innovation thrive. Together, they form the foundation for sustained growth, community connection, and educational excellence across the Nisga'a School District.



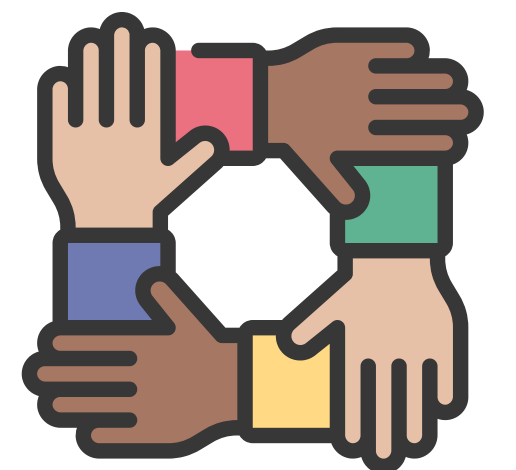
Language and Culture: The Mind, Heart, Body and Spirit of Learning

Establish learning environments across the district where Nisga'a language, culture, values, and knowledge systems are deeply embedded, guiding every educational experience and nurturing the whole learner – mind, heart, body, and spirit.



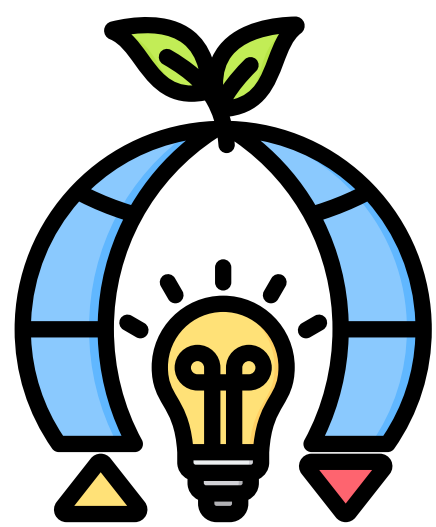
Empowered and Inspired Learners: Well-being, Belonging, and Futures

Champion holistic learner success by fostering well-being, cultural identity, and future-ready competencies, particularly literacy and numeracy to ensure that, every student is engaged in meaningful, inclusive, and empowering learning pathways.



Thriving Staff and Collaborative Leadership: Growth and Innovation

Cultivate a culturally grounded and collaborative professional culture where all staff are supported, inspired, and equipped to lead and innovate through continuous learning, shared leadership, and strong community partnerships.



Strengthening Foundations: Sustainability and Improvement

Advance resilient and future-focused district systems by enhancing operational effectiveness, sustainability, and innovation – ensuring responsive, accountable, and learner-centered practices across all levels.